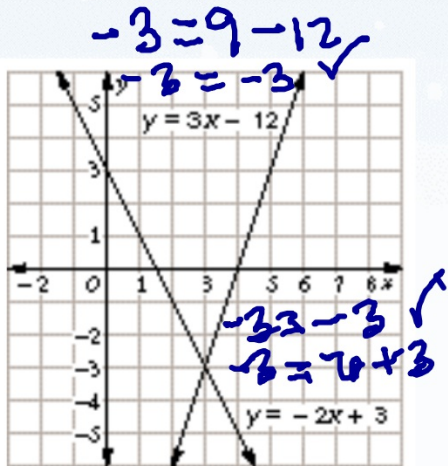
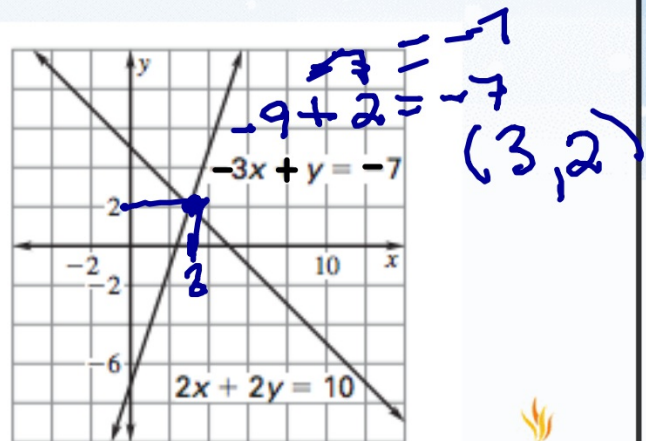


## 7.1 System of Linear Equations by Graphing

Write the ordered pair that intersects the system. Then determine algebraically if the ordered pair is a solution to the system.



(3, -3)



(3, 2)



$$y = mx + b$$

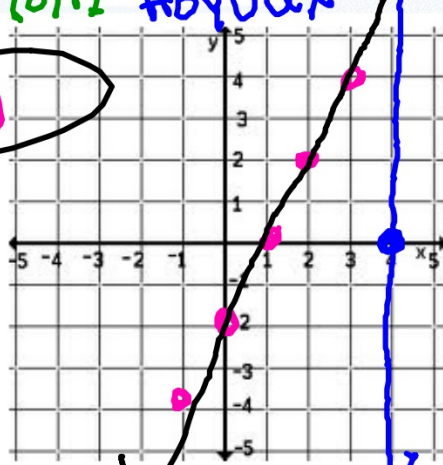
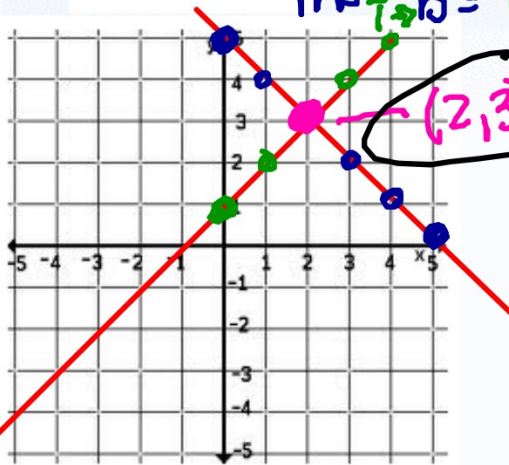
Find the solution to the system by graphing.

Then, check algebraically.  $8 - 6 = 2$  ✓

$3 = -2 + 5$   
 $y = -x + 5$   
 $m = -1$   
 $b = 5$

$3 = 2 + 1$   
 $y = x + 1$   
 $m = 1$   
 $b = 1$

$2x - y = 2$   
 $x = 4$



$y = 2x - 2$   
 $m = 2$   
 $b = -2$

$y = 2$   
 $m = 0$   
 $b = 2$

$(4, 2)$



Find the solution to the system by graphing. Then, check algebraically.

$$x - 2y = -2$$

$$-5x + y = 10$$

$(-2, 0)$

