

Section 7.6 Solving Systems of Linear Inequalities

System of Linear Inequalities

two or more linear inequalities

Solution of a System of Linear Inequalities

an order pair that is solution to each inequality in the system

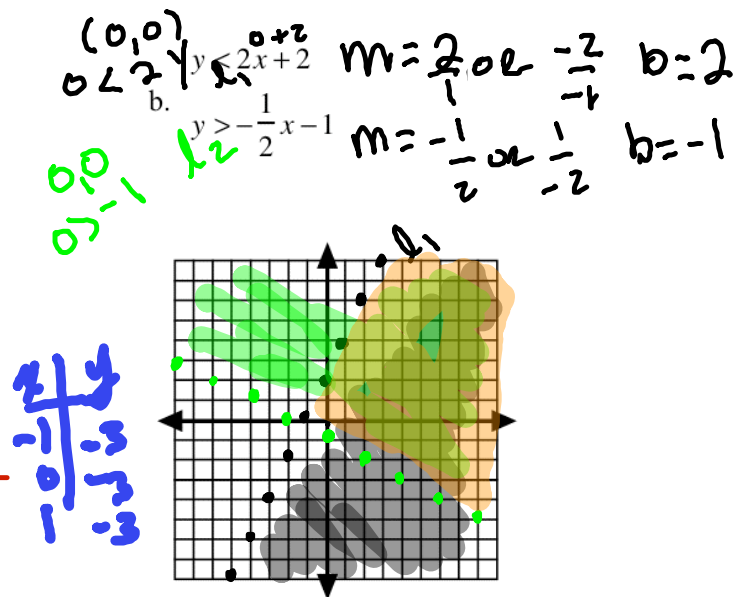
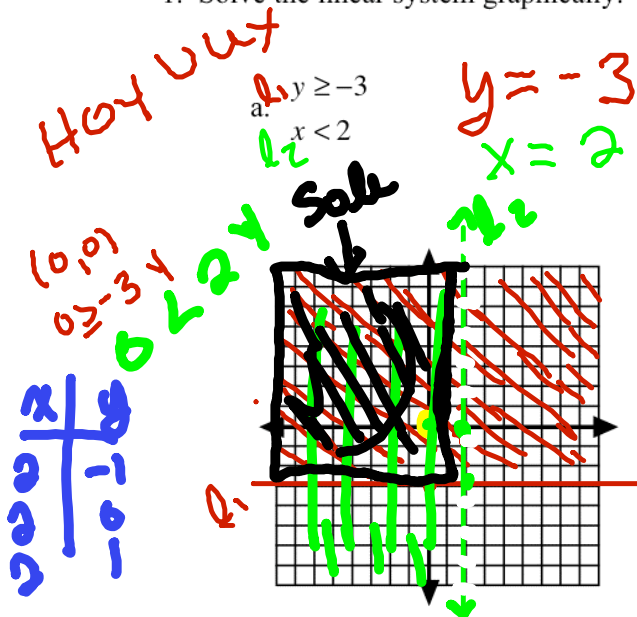
when it satisfies both inequalities

Graph of a System of Linear Inequalities

the graph of all solutions of the system

EXAMPLES

- Solve the linear system graphically.



$l_1: y \leq 5$
 $l_2: y \geq -3$
 Hoy Vert

$y = 5$
 $y = -3$

$1 + 1 \leq 5$
 $2 \leq 5$
 $m = -1$
 $b = 5$

$l_1: x \geq 0$
 $l_2: y \leq 0$
 $l_3: x + y \leq 5$
 $y = -x + 5$
 Hoy Vuuu
 $(1, 1)$
 $1 \geq 0$
 $1 < 0$

